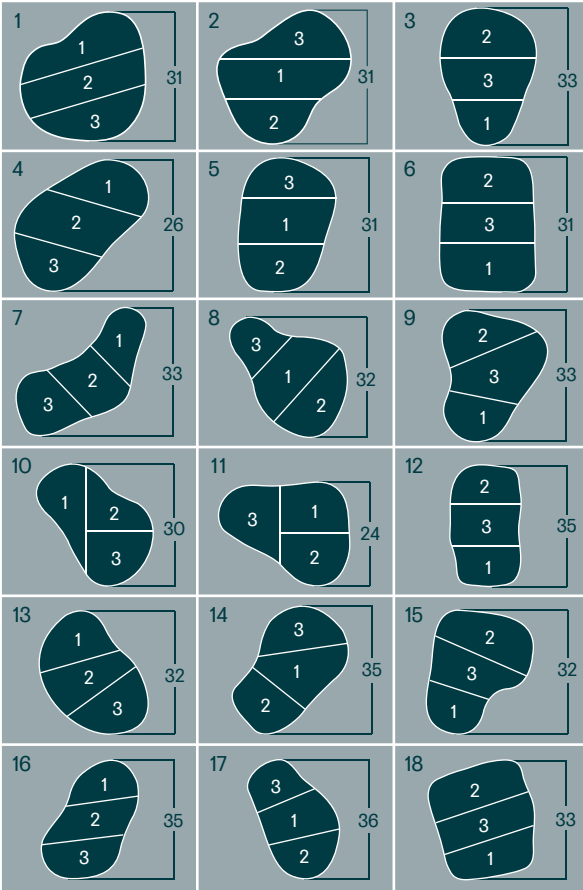


PIN POSITIONS



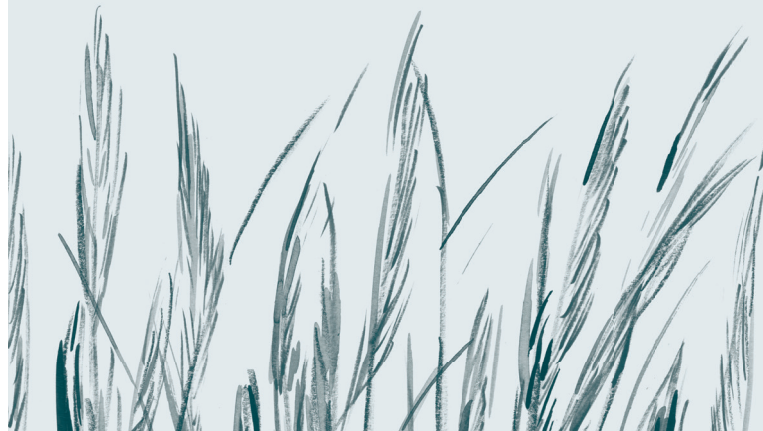
THE GROVE 

THE GROVE 

Chandler's Cross, Hertfordshire WD3 4TG

+44 (0)1923 294266

www.thegrove.co.uk



Competition

Date/Time

Course Rating	74.9	73.3	71.1	72.3
Slope Rating	132	131	126	129

Player

Handicap

Hole	1	2	3	4	5	6	7	8	9	Out	10	11	12	13	14	15	16	17	18	In	Out	Total	Hcp	Nett
Back	351	445	446	210	436	559	150	435	567	3599	379	537	462	244	388	408	184	499	452	3553	3599	7152		
Medal	340	429	428	167	414	538	142	400	549	3407	370	481	433	209	375	394	173	488	436	3359	3407	6766		
Grove	312	385	410	127	402	506	132	393	515	3182	341	463	419	184	342	367	148	470	416	3150	3182	6332		
Front	261	352	342	116	332	495	118	343	442	2801	327	413	325	139	277	324	125	425	351	2706	2801	5507		
Par	4	4	4	3	4	5	3	4	5	36	4	5	4	3	4	4	3	5	4	36	36	72		
Stroke Index	17	11	1	9	3	7	15	13	5		10	12	2	6	16	8	18	14	4					
Hole Location	Front																							
	Side																							
	Follies	Alcove	Hoggerly	Boathouse	Eggshell	Scotch Hut	Pyramid	Rustic Seat	Ruined Tower		Statue of Neptune	Green House	Porico	Praeneste	Tuscan Seat	Temple of Pan	Mausoleum	Madayan Hut	Clock Towers					
Marker's Score																								

Marker's Signature

Local Rules

Out-of-Bounds (Rule 18): Beyond the Grand Union Canal, beyond the white stakes to the right of hole 6, left of holes 11, 18 and beyond the perimeter fence of the golf course.

Penalty Areas (Rule 17): The Grand Union Canal and the River Gade.

Young trees identified by stakes and/or plastic coverings are Immovable Obstructions (Rule 16).

Distances on the sprinkler heads are measured in yards to the centre of the green.

Long Rough Rule: If a ball is deemed lost by all players in a group, the player may drop a ball, under penalty of one stroke, two club lengths from the margin of the rough nearest to where the ball may have been lost.

Player's Signature